

Dr. M. Faruk Köse

Acıbadem Mehmet Ali Aydınlar Üniversitesi
Kadın Hastalıkları ve Doğum AD
Acıbadem Atakent Üniversite Hastanesi

HSIL ve ASC-H Kolposkopisi

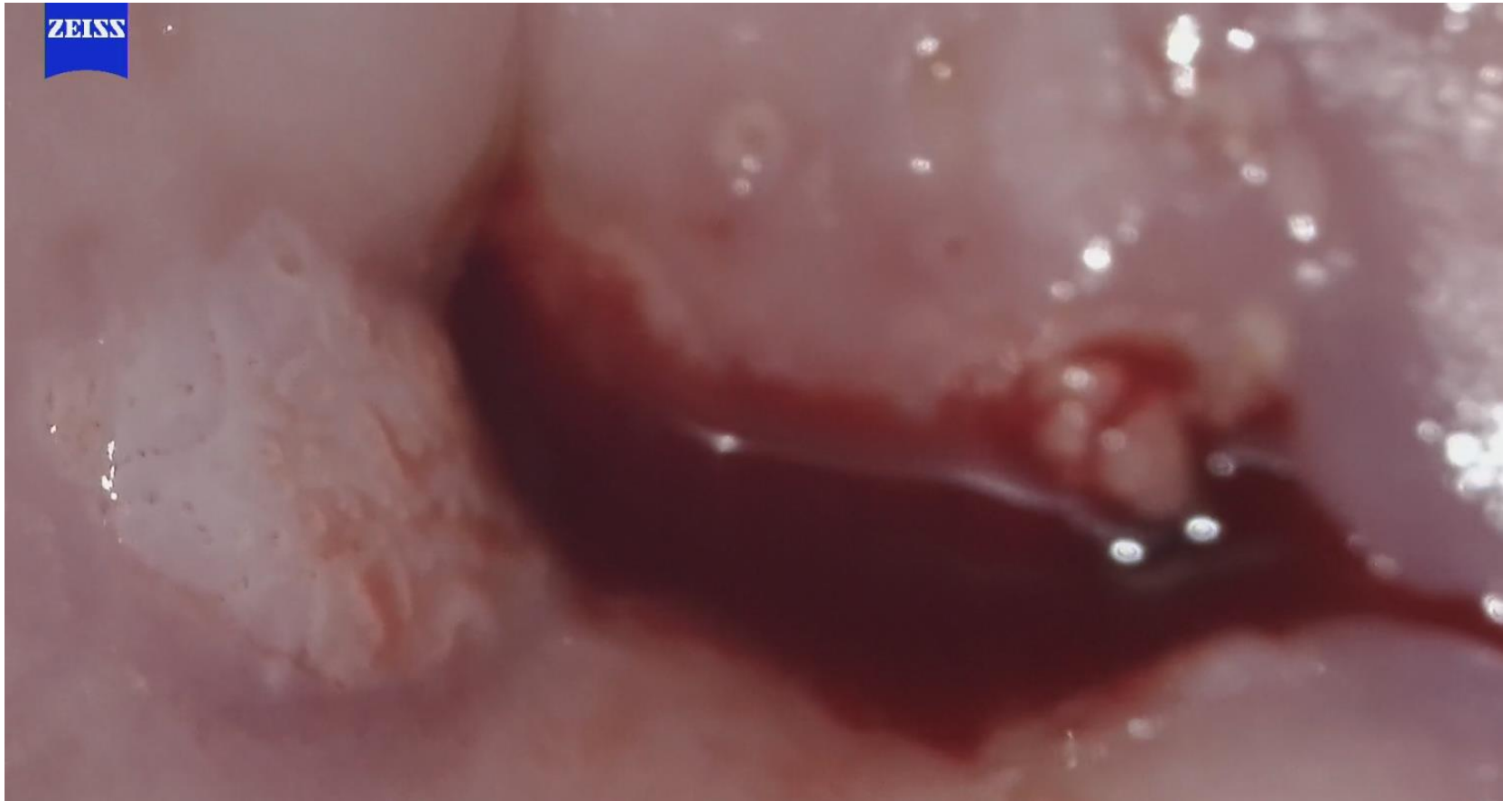
Servikal Sitoloji ve Histopatoloji

Pap	WHO	CIN	Bethesda	LAST
Class I	Normal		Normal	
Class II	Atipik enf.		Benign veya ASC	
			ASC-US ASC-H	
Class III	Displazi		SIL	
	Hafif	CIN 1	LGSIL	LSIL
	Orta	CIN 2	HSIL	HSIL
Ağır	CIN 3			
Class V		CIS		

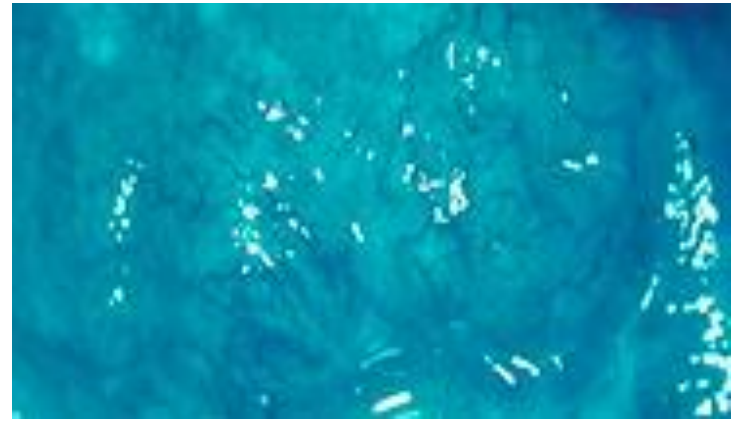
HSIL Lokalizasyonu

- Genellikle transformasyon zonunda, daha şiddetli lezyonlar proksimal yerleşimli
- Lezyonlar endoservikste görülebilirler
- Genellikle tek bir lezyon halinde
- HSIL düşük grade'li bir lezyonun yakınında ya da içinde izlenebilir
- Lezyonun boyutu tedavinin başarısıyla negatif korelasyon gösterir

HSIL Lokalizasyonu



Yeşil Filtre



Asetik Asit Aplikasyonu

- Beyazlık derecesi histolojik grade'in yüksekliğiyle koreledir
- Beyaz kalma süresi LSIL'den daha uzundur
- Eğer posterior fornikse uygulanmışsa asetik asit tekrar kullanılabilir

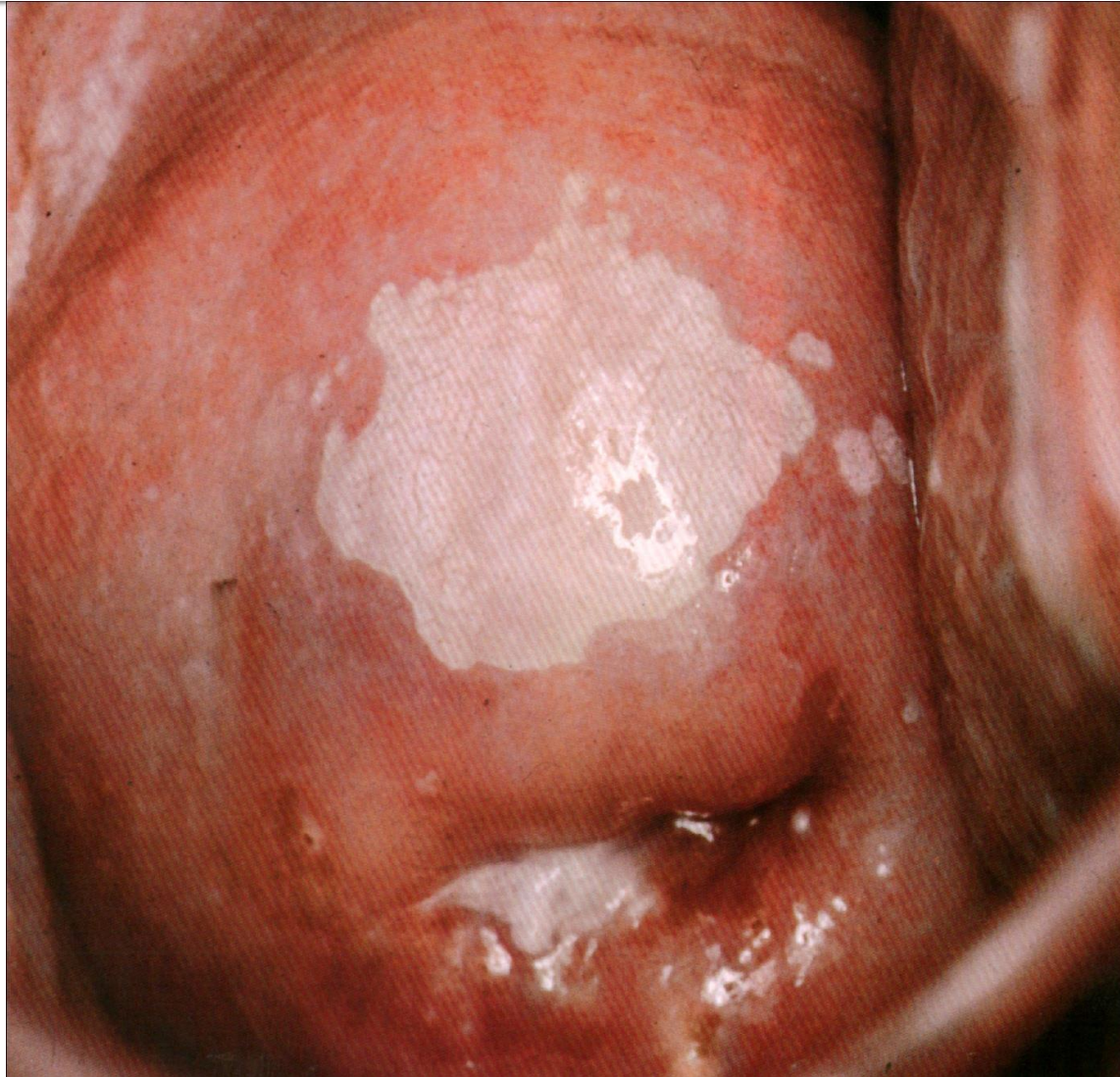
Asetik Asit Aplikasyonu



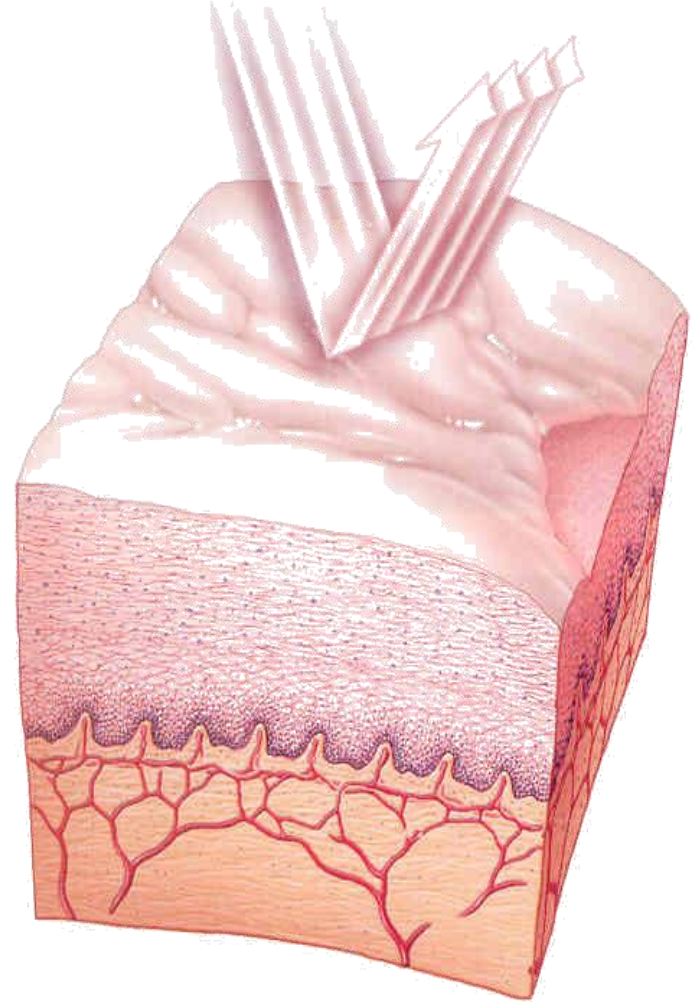
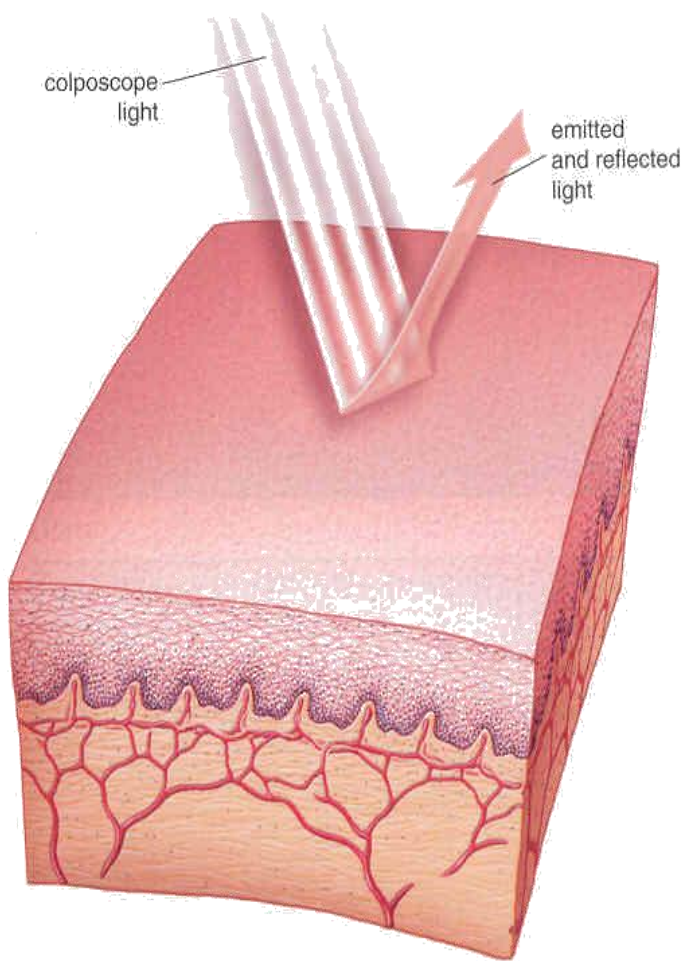
Asetik Asit Aplikasyonu



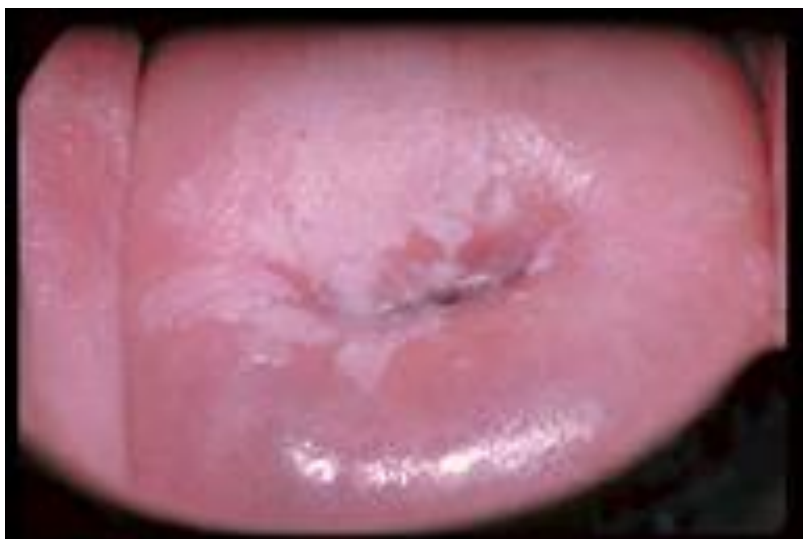
Dens Acetowhite Epitel



Keratozis

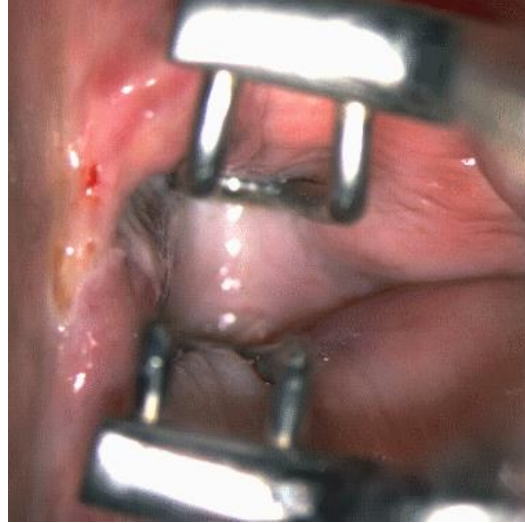


Keratozis



Endoservikal Spekulum

- İnternal sınır görülemiyorsa endoservikal spekulum; endoservikal spekulum yoksa penset kullanılabilir



Endoservikal Spekulum



Sınır

- LSIL'nin aksine HSIL keskin ve belirgin sınırlıdır
- HSIL, LSIL ile birlikte olabilir
- **'Border in border'** ve **'lesion in lesion'** HSIL'nin tipik bulgularıdır
- Proksimal yerleşimli lezyonlar genellikle diğerlerinden daha şiddetlidir

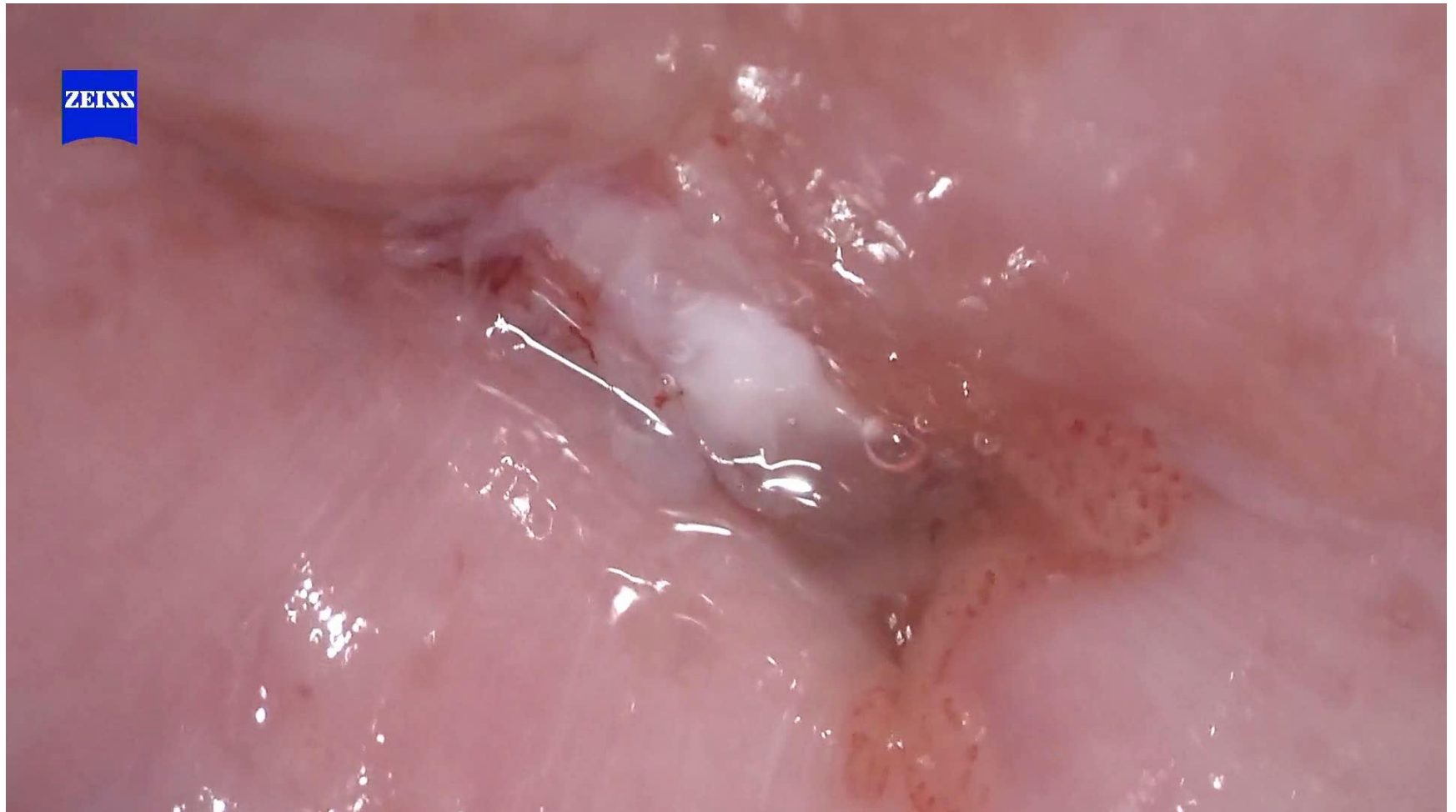
Border in Border : (1) LSIL, (2) HSIL



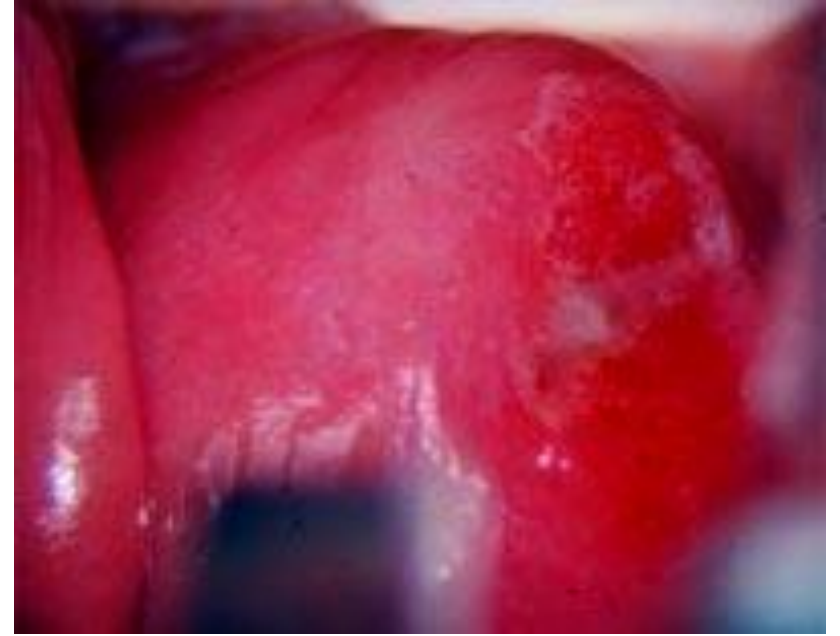
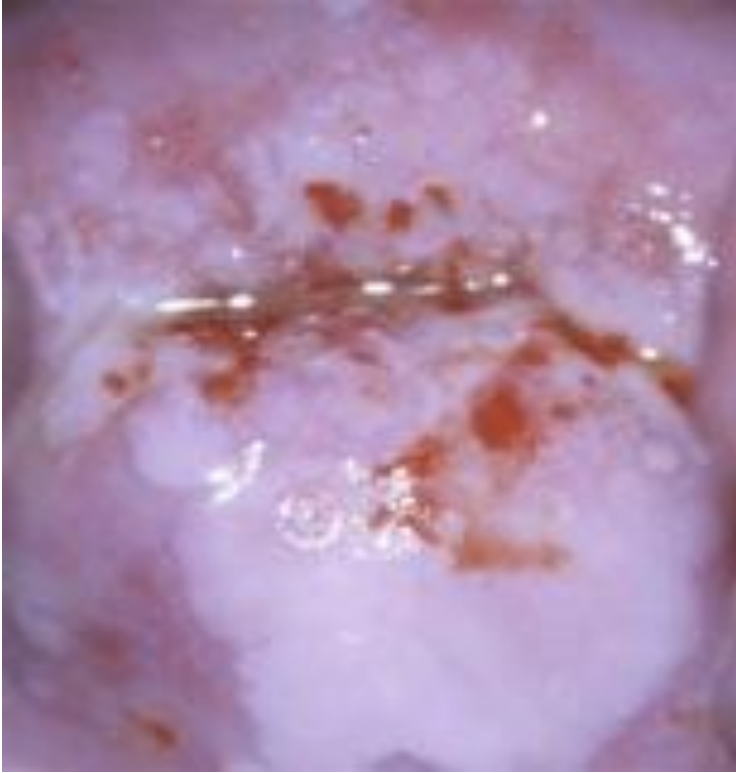
Border in Border (CIN3)



Border in Border



HSIL için Yeni Terminoloji



Şiddetli lezyonların kabarık ve belirgin konturları vardır

Ridge Belirtisi



Rag Belirtisi



"Rag" belirtisi

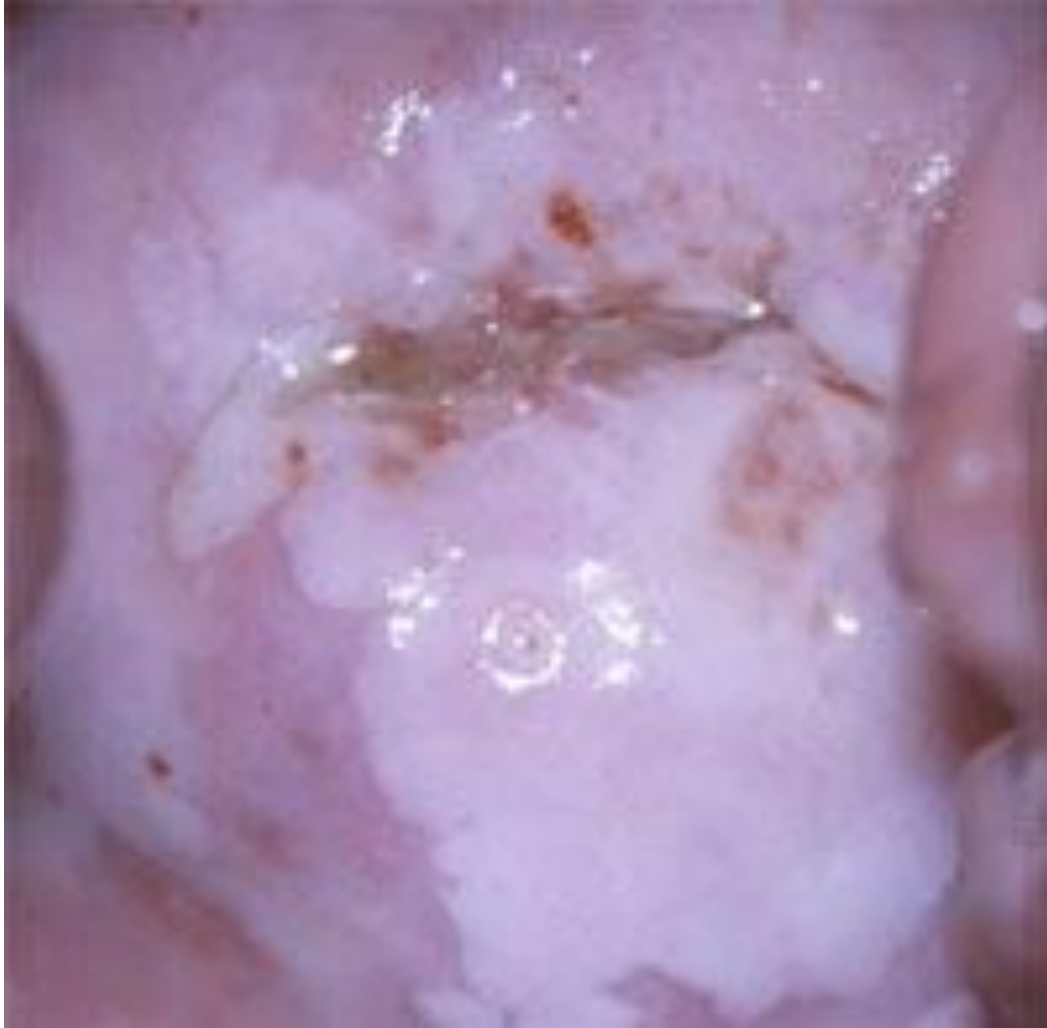
Renk

LSIL'den daha acetowhite

Artmış nükleer densite nedeniyle opak yüzey, istiridyeye beyazı

Daha hızlı beyazlaşma ve daha uzun acetowhite kalma

HSIL



HSIL (CIN3)



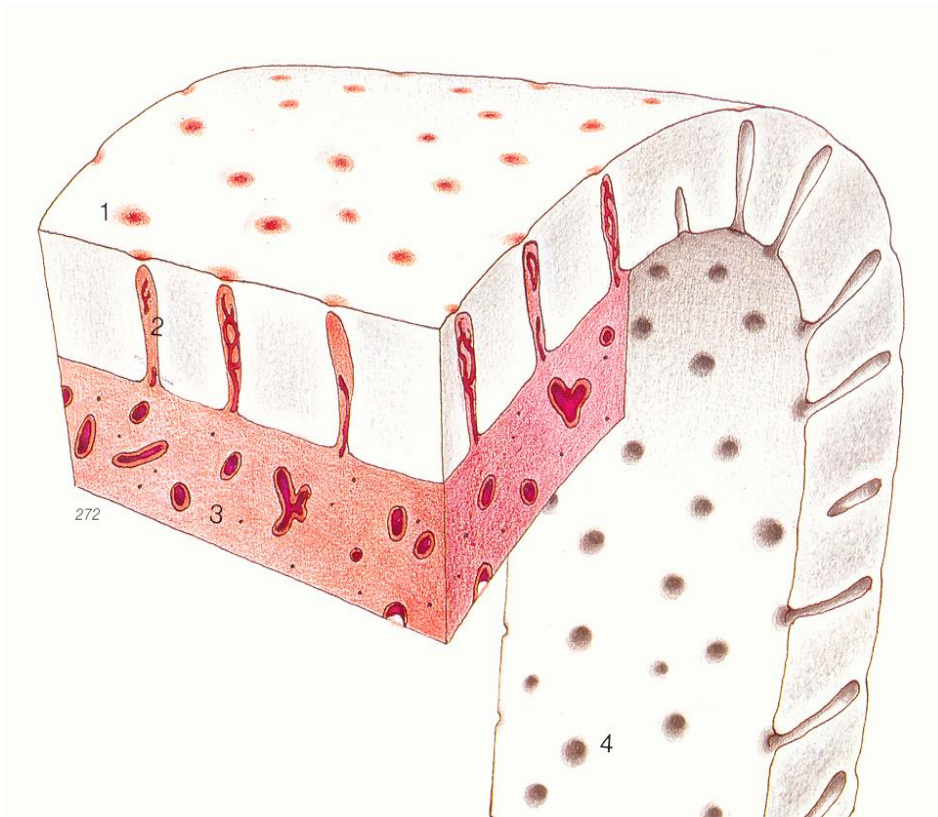
Vasküler Patern

- LSI'lerdeki gibi normal vasküler patern izlenmez
- Minör damarların oklüzyonu nedeniyle vaskülarize görüntü kaybolmuştur
- Aynı sebeplere bağlı olarak kaba vasküler patern de aynı görüntüye sahiptir

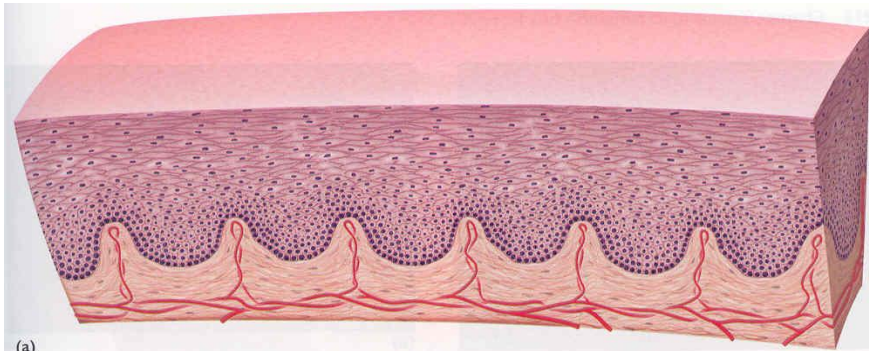
Atipik Vaskülarizasyon



Punktasyon



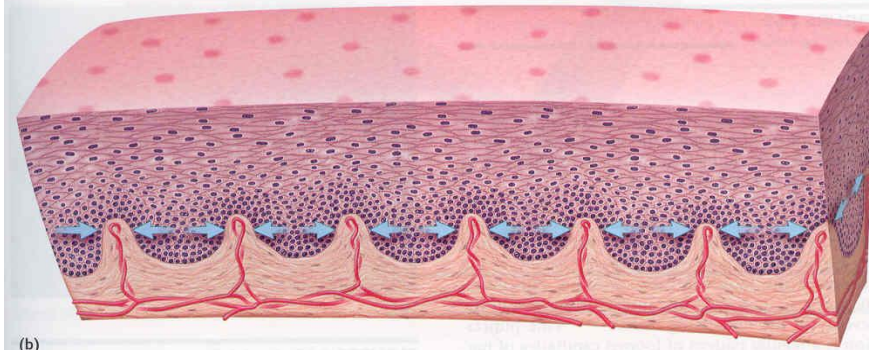
Punktuasyon



(a)



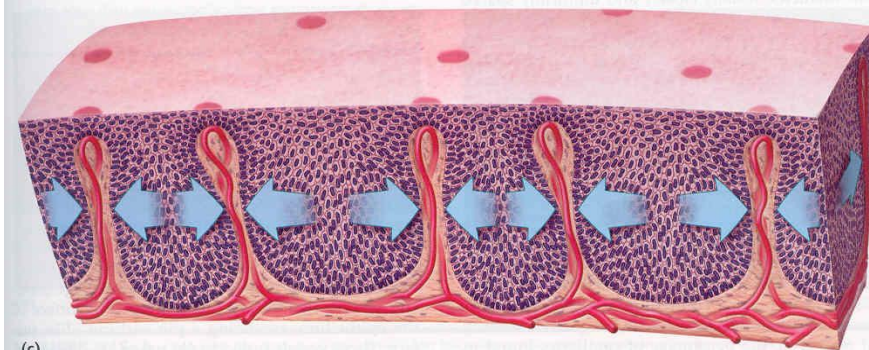
Normal kapiller



(b)



LSIL

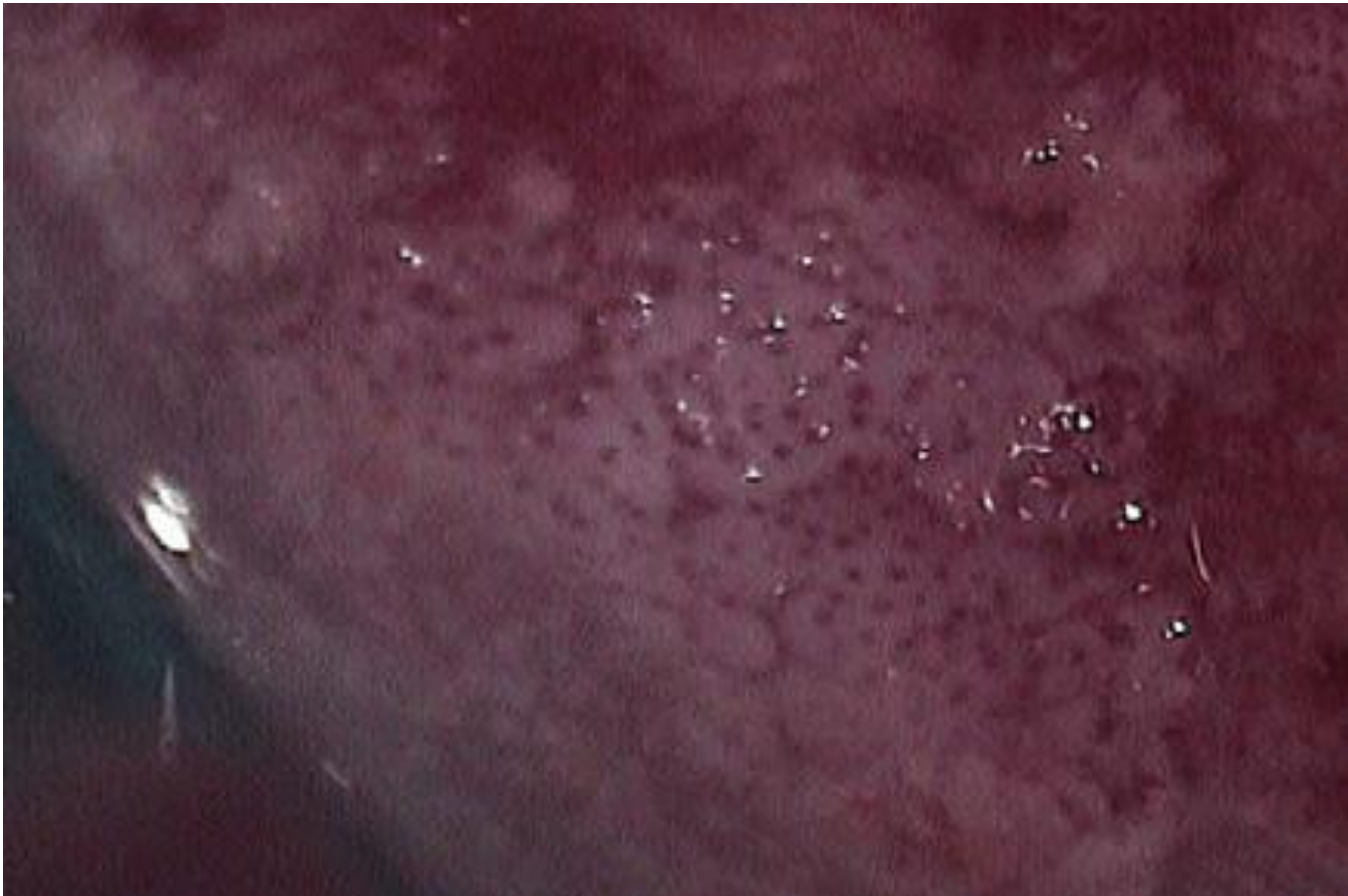


(c)



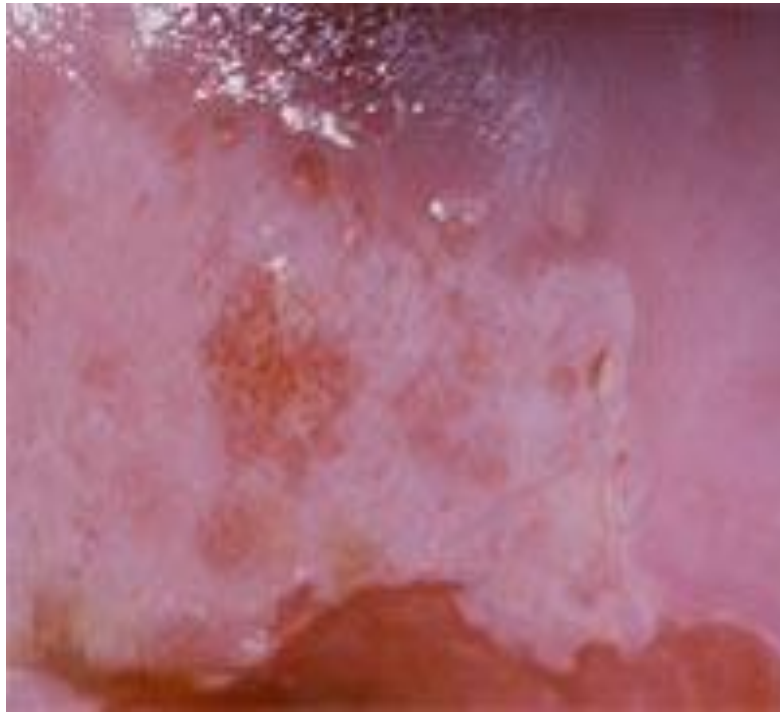
HSIL

Punktasyon



Punktasyon





Kaba Punktuasyon (CIN3)



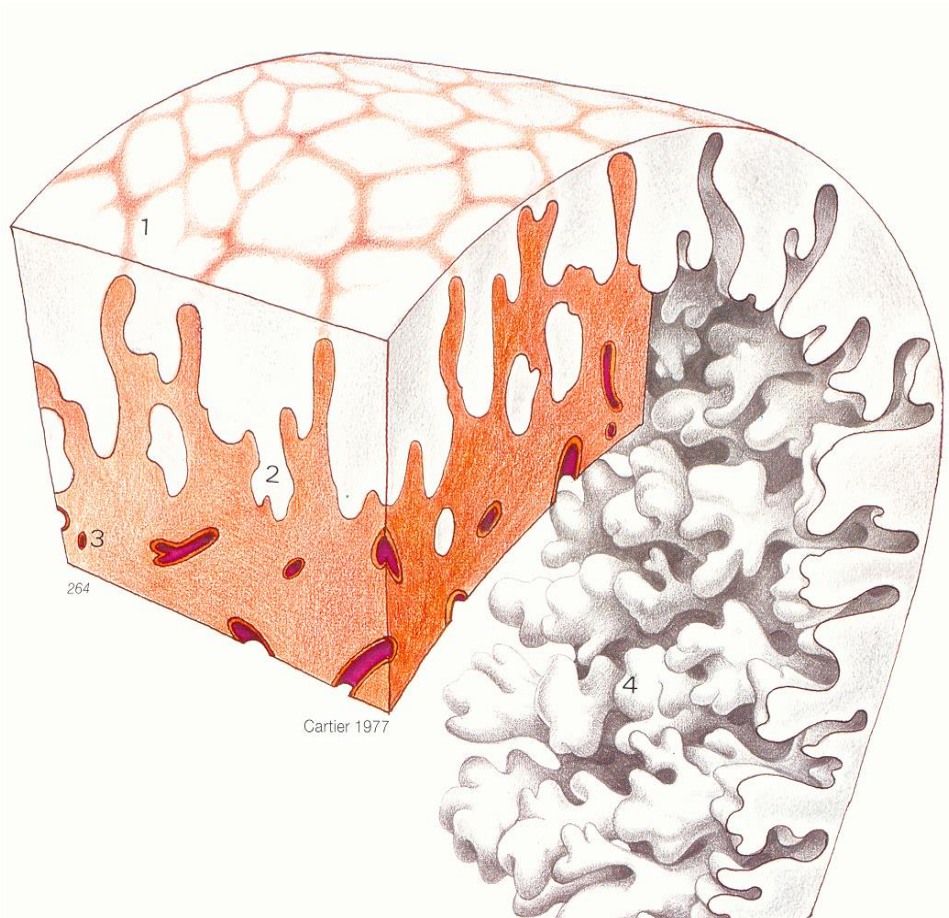
Kaba Puntuasyon (CIN3)



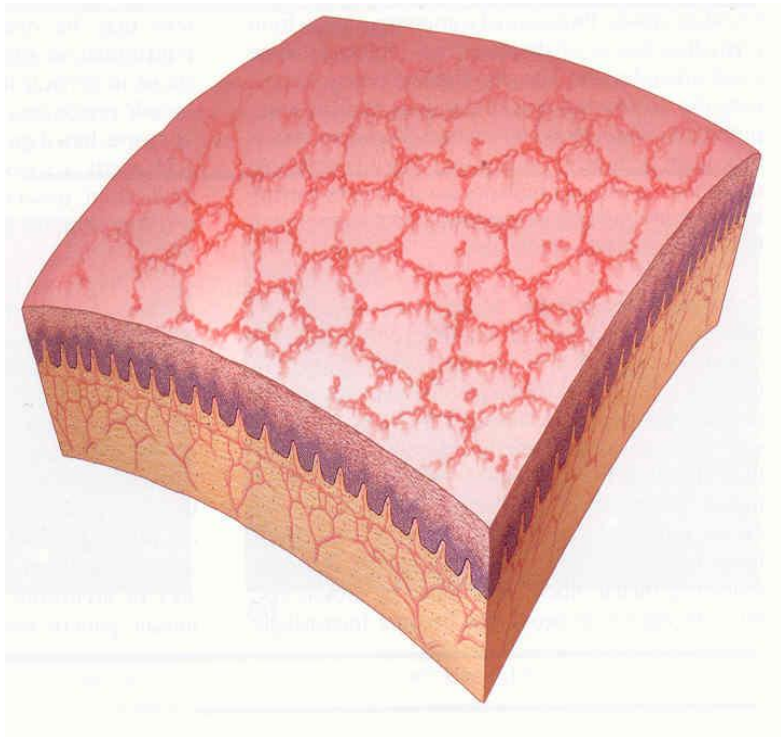
Kaba Puntuasyon



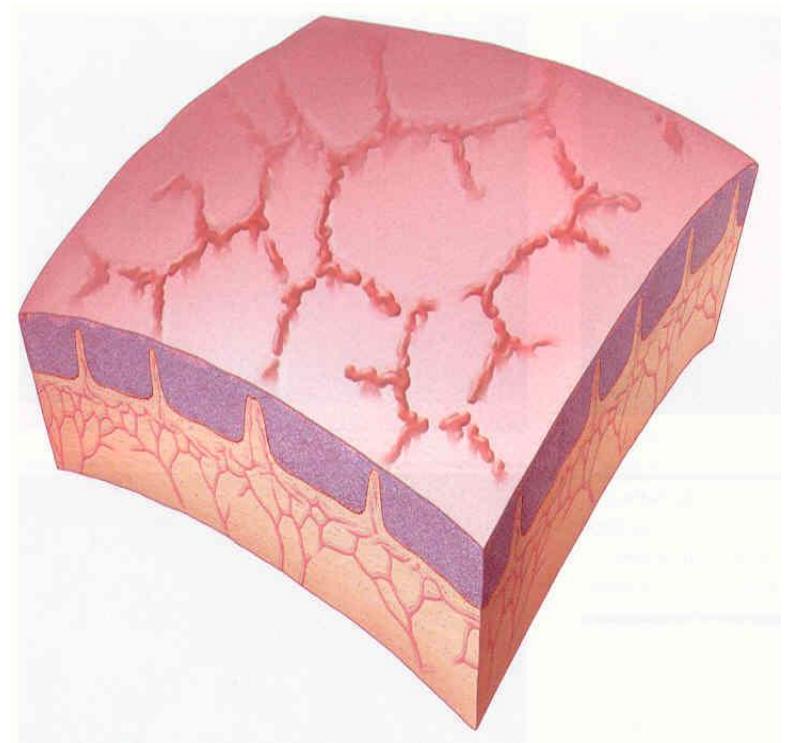
Mozaizm



Mozaizm



İnce mozaizm



Kaba mozaizm

Kaba Mozaizm



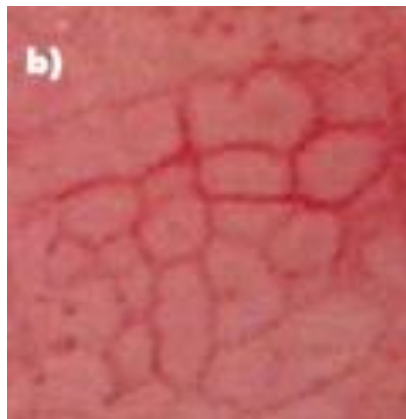
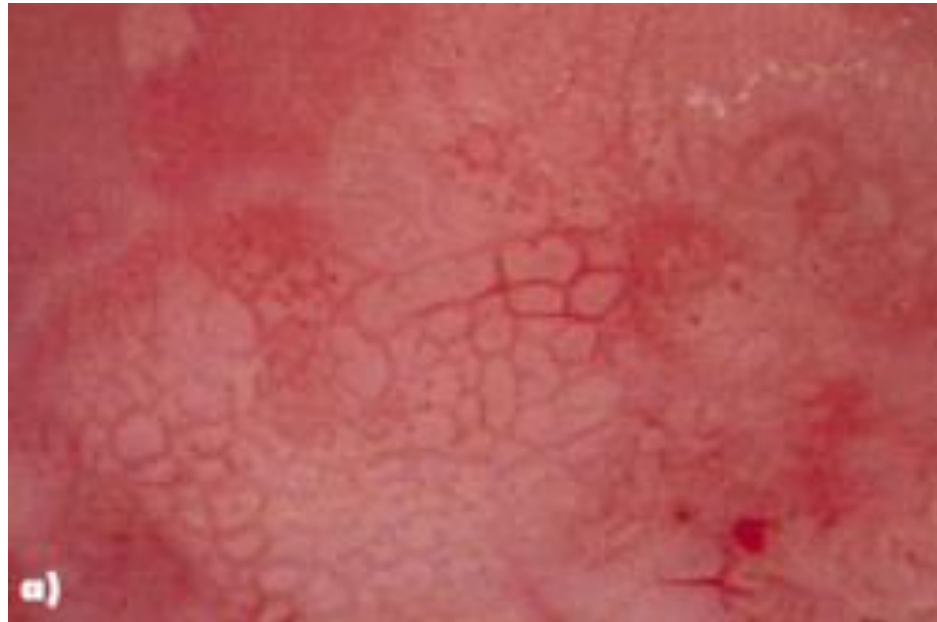
Kaba Mozaizm



Kaba Mozaizm

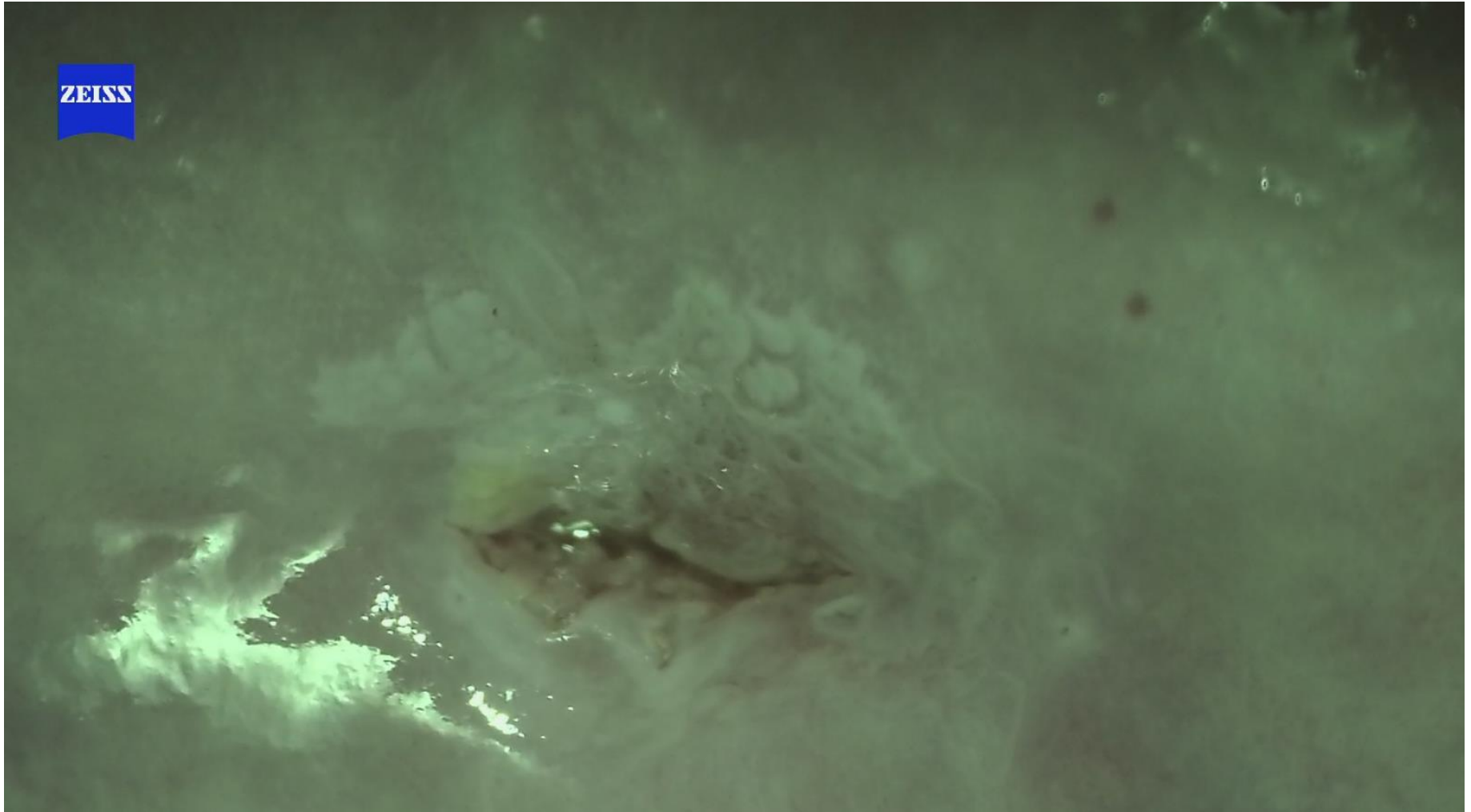


Kaba Mozaizm



Kaba Mozaizm

ZEISS



Kaba Mozaizm ve Puntuasyon

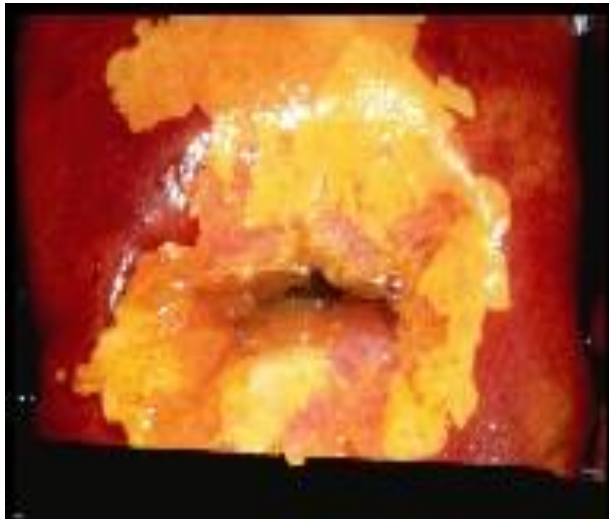


Kaba Mozaizm ve Puntuasyon

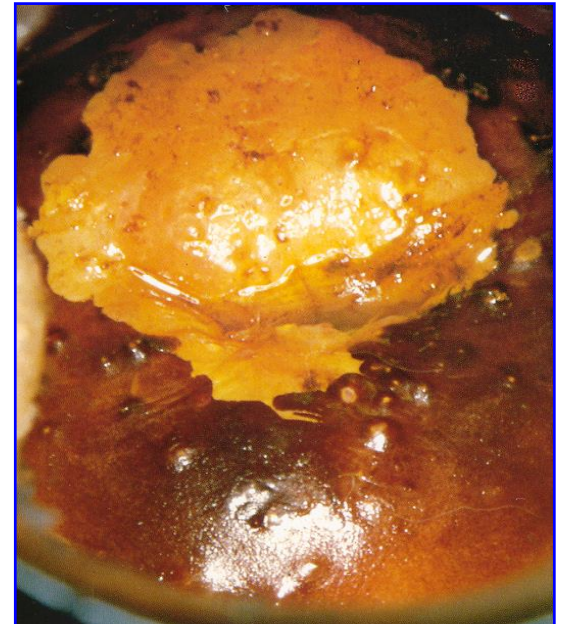


Lugol Aplikasyonu

L
S
I
L



H
S
I
L



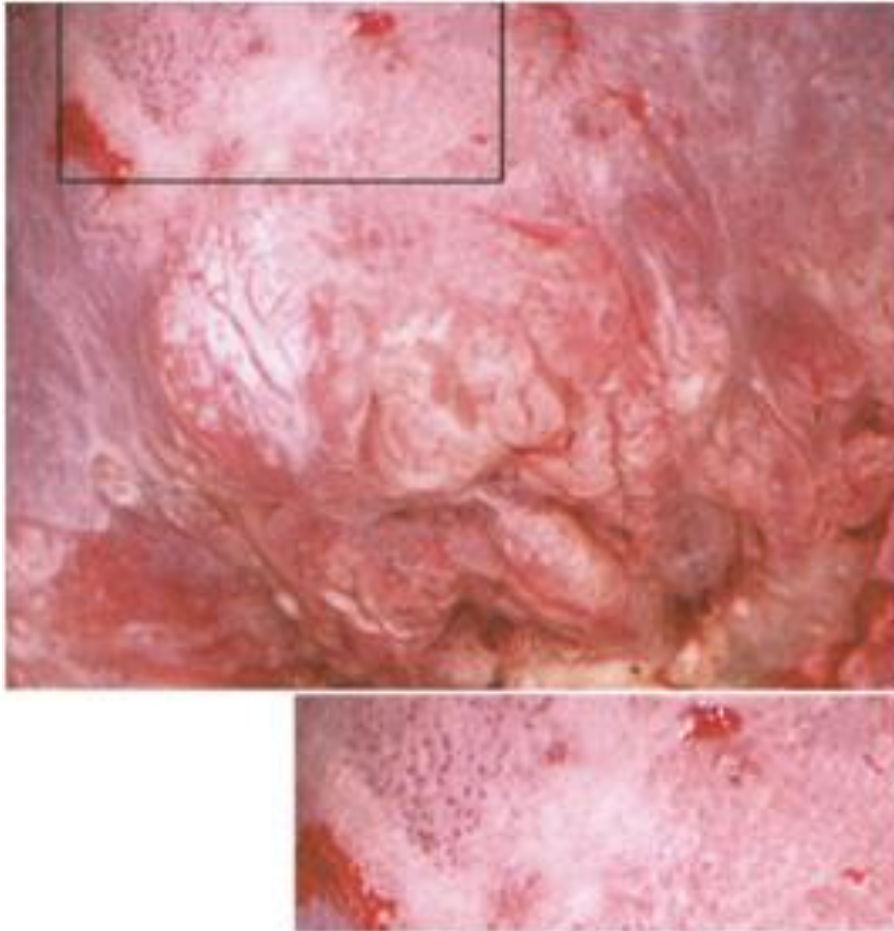
HSIL



HSIL (CIN3)



Gebelikte HSIL



- Dens acetowhite epitel
- Kaba mozaizm
- Kaba punktuasyon
- Biyopsi: CIN3

Özet

Acetowhite changes in low- and high-grade colposcopic lesions

Feature	Low-Grade Lesion	High-Grade Lesions
Color	Snow white to bright white	Bright white to dull (oyster) gray
Lesion size and shape	Relatively large and geographic; raised and papillary	Relatively small; smooth and flat
Location	Throughout the ectocervix	In the upper transformation zone at or near the new squamocolumnar junction
Time interval to color change; number of reapplications	Slow to change; requires numerous reapplications to maintain color differential	Rapid change; requires few reapplications to maintain color differential
Border	Irregular; relatively indistinct	Straight, raised or rolled; prominent

Özet

Angiogenic changes associated with low- and high-grade colposcopic lesions

Feature	Low-Grade Lesion	High-Grade Lesion
Acetic acid change	Persistence of fine punctation/ mosaicism	Loss of fine punctation/ mosaicism Persistence of coarse punctation/mosaicism
Punctation	Predominately fine (uniformly sized, relatively small dots confined to the surface epithelium; uniformly close intracapillary distance)	Predominately coarse (variably sized dots may float above the surface epithelium; variable intracapillary distance is increased overall)
Mosaicism	Predominately fine (uniformly sized small tiles encased by uniformly sized small vessels) Fine punctation is often present	Predominately coarse (variably sized large tiles encased by enlarged vessels that are of nonuniform caliber) Coarse punctation is often present

İlginiz için Teşekkürler!

Wish to see smily cervix!

